



QUALITY CHANGES THE WORLD

Sany Heavy Machinery Co., Ltd

Sany Industrial Park, Dongcheng Avenue, Kushan City, Jiangsu Province, China

Hotline: +86 4008-28-2318 (Service) / 4008-87-9318 (Support)

<https://www.sanygroup.com>

April 2022 Edition

Materials and specifications are subject to change without notice. Featured machines in photos may include additional equipment. See your local dealer for available options please.



Reliable, High-productivity & Smart

Rated power: 97 kW@2200 rpm | Operating weight: 11,000 kg | Rated payload: 3,500 kg

Bucket capacity: 2.0 m³

SW936KI
Wheel Loader



Highlights

Engineered for greater reliability & productivity, the SW936K1 is built of 4-ton class frame, leading hydraulic & braking technology.

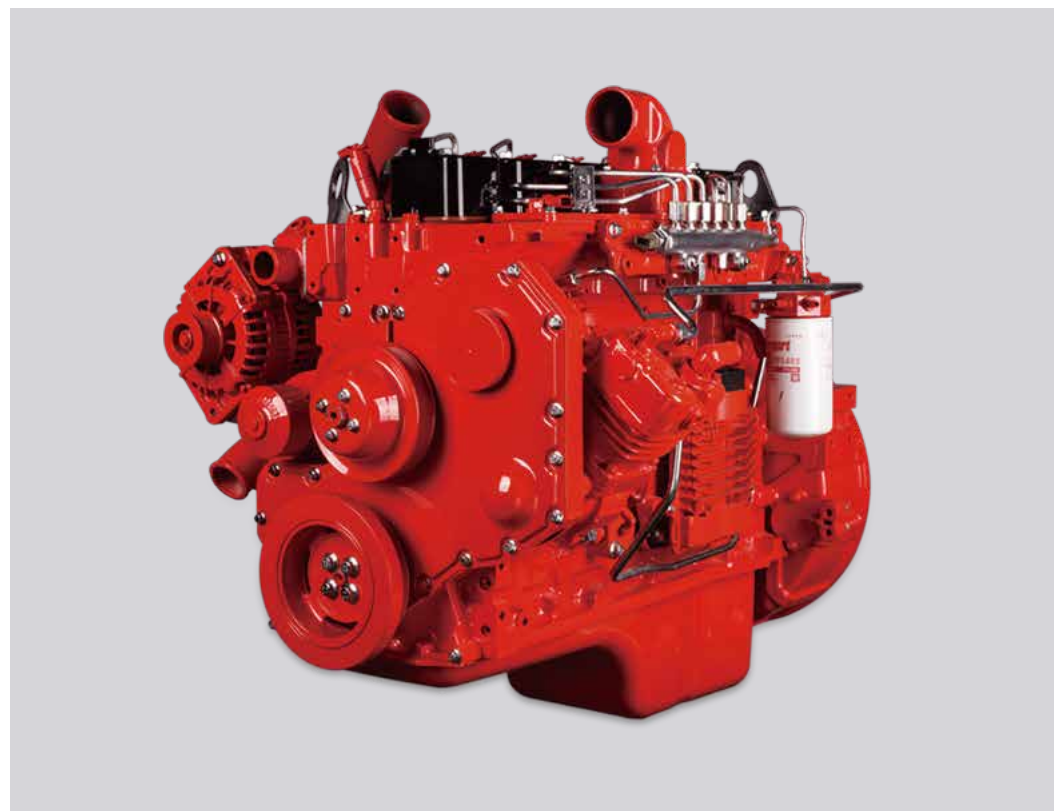
4-ton class Frame

Full-hydraulic Braking system

Intelligent Management

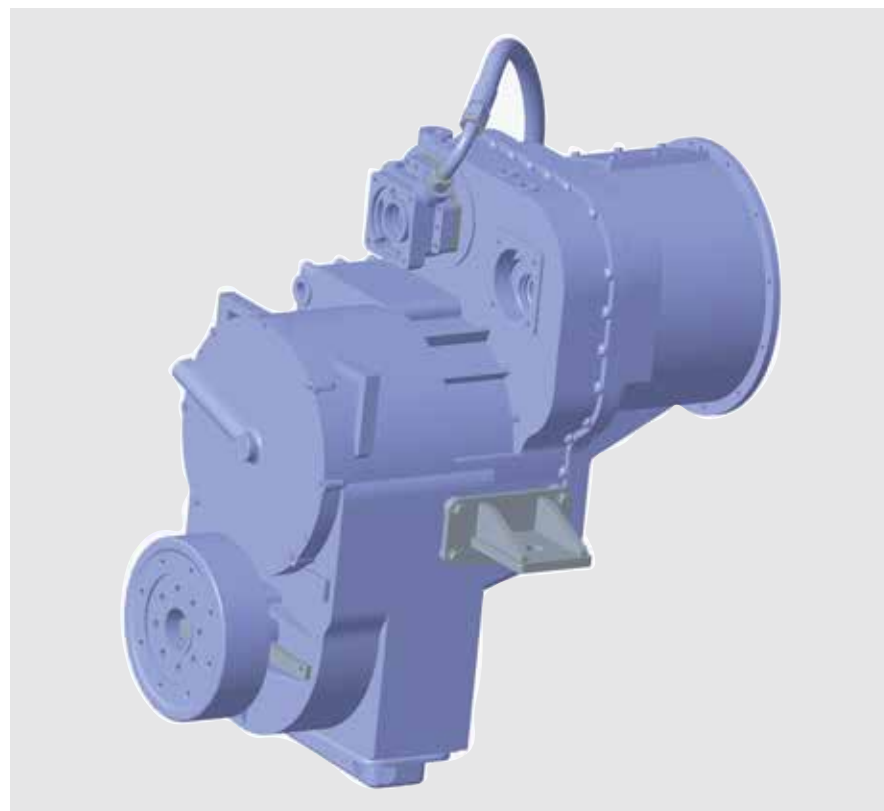
Comfortable Cabin

Engine and Transmission



Cummins Engine

The customized engine is powerful, reliable, saving energy and easy to maintain



Planetary transmission

This customized transmission is equipped with large capacity torque converter and it can improve the travelling speed by 3% and the traction force meet 107KN with high efficiency.

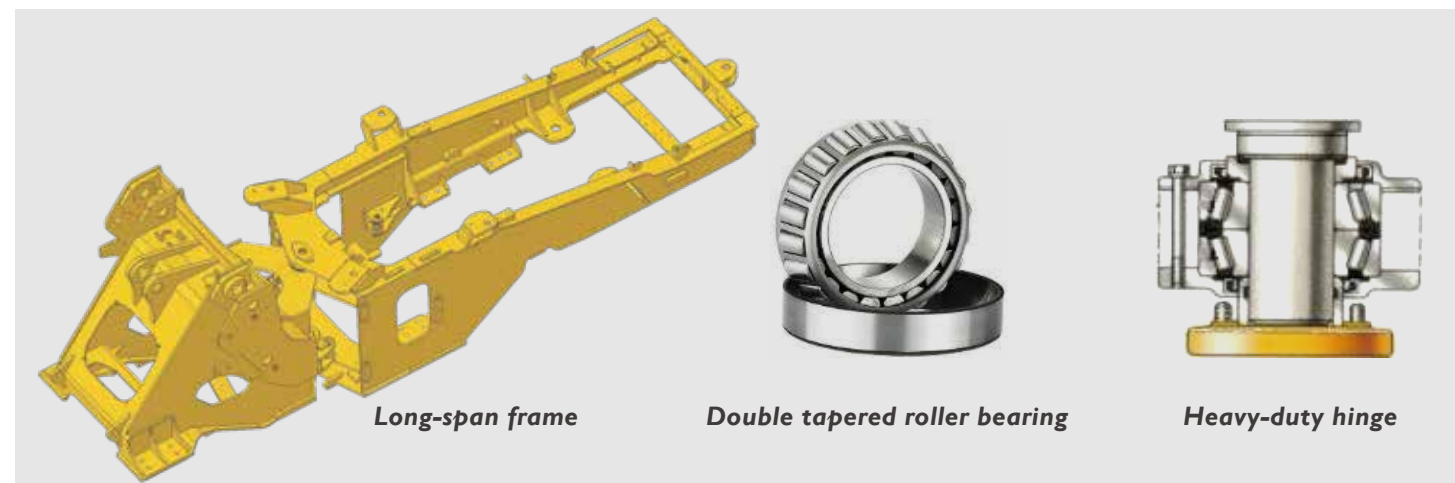
Axles

Heavy-load oscillating axle

Intergrated oscillating axle structure has better adaption to heavy load condition, and avoids the faults such as crack of subframe and hinge pin of non-swinging bridge.



Frame



Long-span frame

Double tapered roller bearing

Heavy-duty hinge

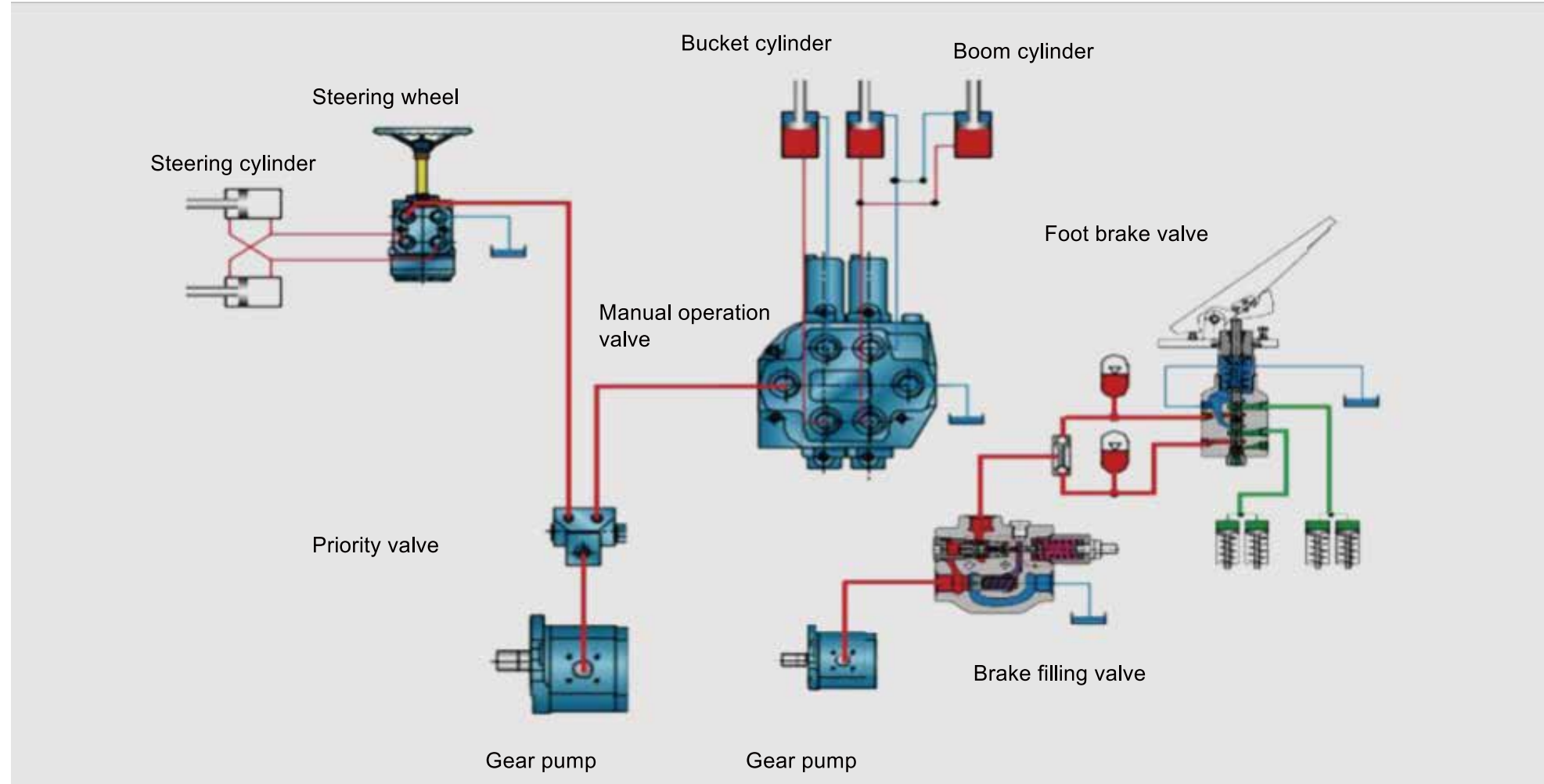
Long-span Frame

- Long-span hinge structure, ensuring high torsional strength, and 3.5T loading capacity.
- Both of upper and lower hinges are provided with double tapered roller bearing to ensure high bearing capability with low failure rate.

Hydraulic System

Large displacement and efficient system

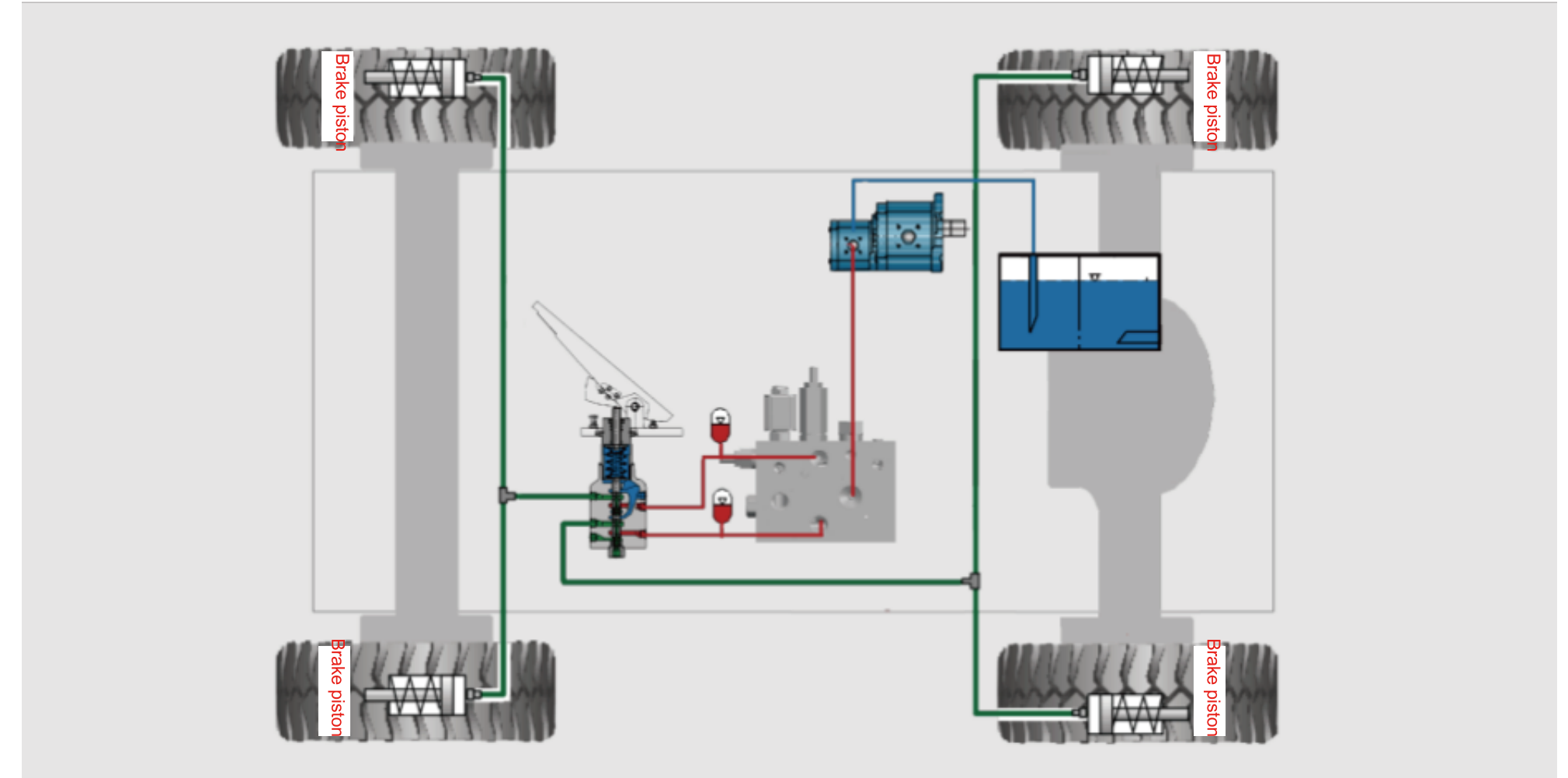
Equipped with large displacement and reliable hydraulic pump ensuring the flow distributed as required between the steering system and Implement system with flexible steering and low total cycle time.



Braking System

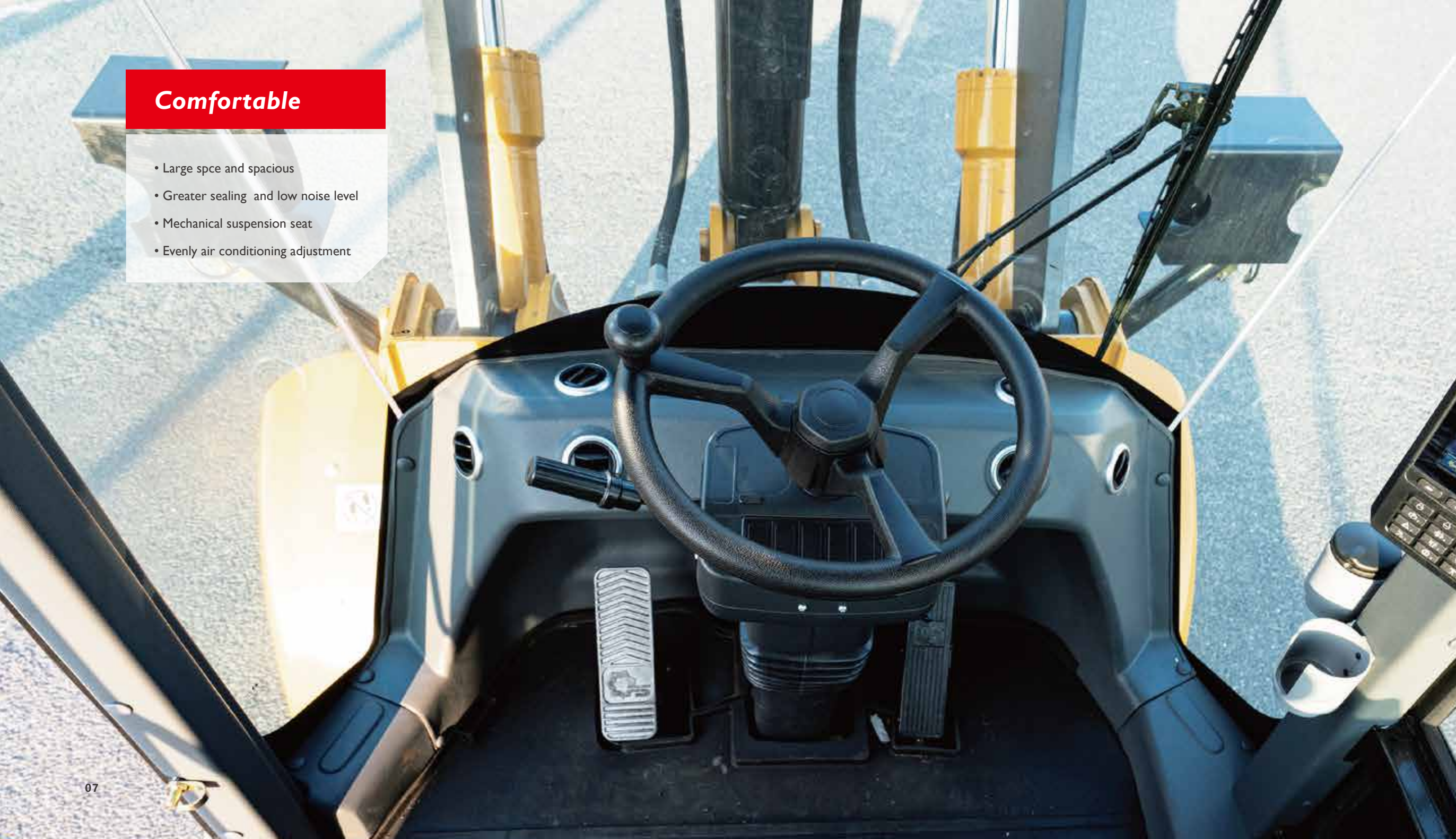
Double-pipeline fully-hydraulic brake

Flexible and reliable braking, circulating cooling of hydraulic oil, reduce braking failure due to thermal attenuation, and prolong the service life of hydraulic elements.



Comfortable

- Large space and spacious
- Greater sealing and low noise level
- Mechanical suspension seat
- Evenly air conditioning adjustment



Cabin



- 9-dimensions adjustable suspension seat
- Ulter-large front/ rear adjustment space
- Large-angle adjustment of backrest



2 air outlets on both side



6 air outlets on the front decoration panel



Easy Service

- One-key service call
- Intelligent diagnosis
- Prompt troubleshooting
- Networking of computer group and easy management.

Intelligent machine group



EVI-Cloud:
Cloud machine group management system of Loader

- Distribution of machine group
- Construction statistics
- Remote service

EVI-APP:
Client device management system of Loader

- Real-time monitoring of device condition
- One-key service call
- Visible servicing process
- Community forum
- Thermodynamic chart of construction



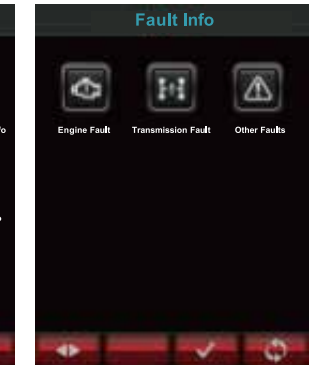
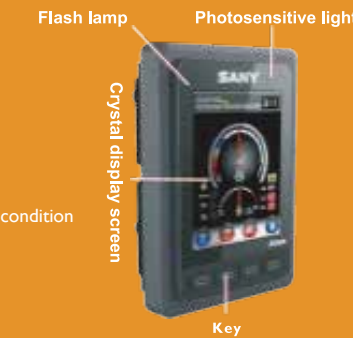
“Easy N”APP:
Cloud machine group management system of Loader

- Field service diagnosis system of Loader
- Fault diagnosis
- Wireless debugging and programming

Easy Operation

Intelligent display

- 7.0" TFT display-control integrated
- Real-time operating system, control speed < 1 ms
- IP65 protection grade, be adapted to severe work condition
- Real-time display of device information

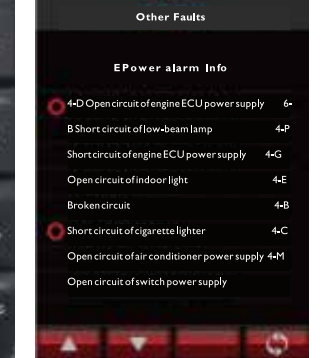


One-key start, key management

- Intelligent startup management system of CAN communication
- Pioneering intelligent key startup, engine startup and quenching management system at home, to realize easy startup and shutdown, prolong the service life of starting motor and battery.
- One-key startup, avoid impact or timeout during engine startup, avoid overheating of starting motor and battery over-discharge effectively.
- Intelligent key management, private customization of owner password, distribution of 10 passwords by owner, to bring higher safety to device.

Intelligent power management

- Intelligent power management and fault diagnosis system of CAN communication, Pioneering CAN-bus communication control and power management system of Loader at home, to realize overload protection, multi-mode auto fault recognition and alarm.
- Intelligent power management module, contact-free relay, with overload and short circuit protection, improving the service life by 100 times.
- Graph + text fault diagnosis, provide direct and accurate display of fault information, ensure convenient and fast troubleshooting.
- Intelligent, contact-free and multi-function key panel, integrate multiple functions in one keys, enjoy more comfortable operation, simple wiring and reliable use; service life of panel key can reach 300,000 times, far beyond the service life of 40,000 times of rocker switch.



Easy Maintenance



Independent cooling of air conditioner

It is convenient to disassemble and replace the condenser.



Single-layer radiator

Be provided with single-layer radiator for promoting daily cleaning and maintenance.



Centralized grease points

The grease fittings are highly concentrated to improve the convenience of maintenance.



Side opening hood

Convenient for the replacement of engine oil and filter element, fuel filter element, air filter element and matched parts.

Technical specifications

Engine		Transmission system	
Engine	Cummins	Torque converter & transmission	Planetary and mechanical transmission
Model	QSB5.9-C130-30		Gear Speed
Type	Inline 6-cylinder, water cooling, high pressure common rail, turbo-charged and inter-cooled meet China Stage III emission requirements.	Traveling speed	Forward I 12
Rated power/rated rpm	97kW@2200r/min	(km/h)	Forward II 37
Number of cylinders x cylinder bore x stroke	6 x 102mm x 120mm		Reverse I 16
Maximum torque	650Nm		

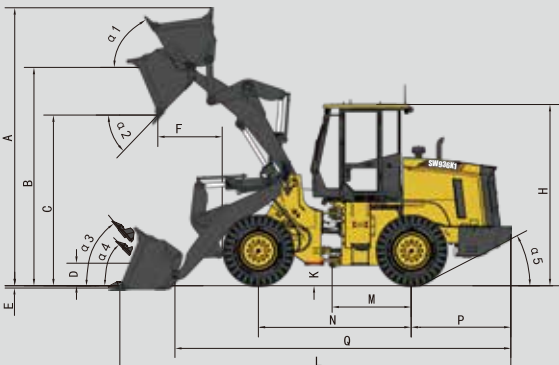
Work hydraulic system		Steering hydraulic system	
3-pump interflow, quantitative hydraulic system		Loading sense and steering priority	
Working pump	Gear pump	Steering pump	Gear pump
Flow/ rotation speed	209L/min@2000r/min	Flow/ rotation speed	/
Total cycling time (s)	≤9	Articulation angle	±40°

Front drive axle and tires		Braking system	
Drive axle type	4WD	Service brake	Full hydraulic caliper disc brake
Tire specification	17.5-25	Parking brake	Mechanical flexible shaft drum brake
Tire pressure	Front/rear wheel: 0.35/0.3M pa		

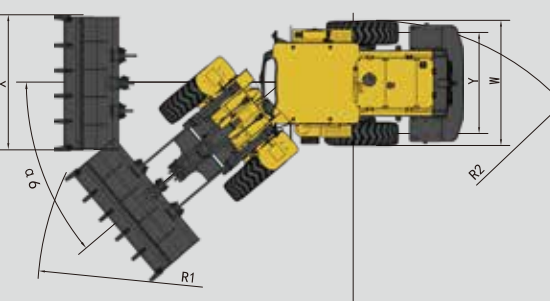
Service Refill Capacities			
Fuel tank	170L	Hydraulic oil tank	100L
Cooling system	25L	Front Axle oil	15.4L
Torque converter & transmission system	35L	Rear Axle oil	15.4L

Specifications	SW936KI
Forward speed (Km/h)	0~37
Reverse speed (km/h)	0~16
Total cycling time (s)	≤9
Max.breakout Force (kN)	≥97
Max. traction force (kN)	≥106
Bucket capacity (m³)	2.0
Operating weight (kg)	11000
Rated loading (kg)	3500
Engine	CumminsQSB5.9-C130-30
Rated power (kW/rpm)	97/2200
Max. torque (Nm/rpm)	650

Item (mm)	SW936KI
A. Overall height with bucket at Maximum lift	4950±50
B. Hinge pin height (fully raised)	4028±50
C. Dump clearance (at 45°-fully raised)	3130±50
D. Hinge pin height (at carry position)	465
E. Digging depth	120
F. Dump reach (at 45°-fully raised)	1160±50
H. Overall height (Rops cab)	3350±50
K. Ground clearance	345± 20
L. Overall length, Bucket on Ground	7380±100
M. Length from Centerline to Rear Axle	1425
N. Wheel base	2850
P. Center Line Rear Axle to Edge of Counterweight	1946±30



Item (mm)	SW936KI
Q Length from bucket hinge shaft to edge of counter weight (mm)	6180±100
a1 Roll back angle, Boom fully raised	61±5°
a2 Max. dump angle, fully raised	45°
a3 Roll back angle at carry position	54°
a4 Roll back angle at ground level	45°
a5 Departure angle	28°
a6 Articulation angle	±40°
W Width over tires (mm)	2300±50
X Bucket width (mm)	2460
Y Tread (mm)	1850
R1 Turning radius to outside of bucket (mm)	5754±150
R2 Turning radius to outside of tires (mm)	5140±150



Service Outlets/Spare Parts Warehouse

Service Network in China

Service Hotline 4008 28 2318
Complaints Hotline 4008 87 9318

Spare Parts Warehouse
535 spare parts warehouses
10,000 Over 10,000 kinds of spare parts
500 Million- RMB Spare parts stock amounting to 500 Million- RMB

Service Outlets
600 Service outlets
2,000 service engineers overseas



Take the lead in introducing 6S center service pattern in engineering machinery industry. Establish twenty-six 6S centers of provincial level and build the first 400 service hotline system domestically

