



Quality Changes the World



Quality Changes the World



**SANY HYDRAULIC EXCAVATOR  
SY75C**

## **ENERGY SAVING STAR, LEADING THE INDUSTRY**

---

PROFESSIONAL AND RELIABLE

PERFORMANCE IS REMARKABLE

SAFETY AND ENVIRONMENTAL PROTECTION

THE COMFORT AND CONVENIENCE



# PROFESSIONAL AND RELIABLE

**Powerful Engine**  
43KW/2000RPM



▲ ISUZU 4LE2XASC

## ◆ Larger Counterweight Designed to Improve the Overall Stability of Machine

With a larger counterweight designed on the basis of balancing the wide gauge and undercarriage, the overall stability of machine is improved.

## ◆ Left and Right Side Doors and Covers that Can Be Fully Opened

Left and right side door and rear hood can be fully open, allow the routine maintenance for engine, air-conditioning compressor belt tension, etc.

## ◆ Powerful Digging Force

Bucket digging force is up to 56kN from 51kN, and arm digging force up to 30kN.

Bucket Digging Force  
**51/30**  
KN/KN  
Arm Digging Force



## ◆ Powerful Engine

Sany engine with four-cylinder four-stroke direct-injection provides a stronger power for the excavator.

## ◆ Auto Deceleration System

The function of auto deceleration reduces fuel consumption by 5-10%. When an operation has been stopped for 5 seconds, the engine speed drops automatically to idle level and maintains the idling state. When the operation is resumed by maneuvering the control levers, the engine speed will increase to the set rpm within 0.1 second. The working capability is restored instantly. The auto idle switch is always active after the excavator is restarted each time.

## ◆ Filter Element

High precision pre-filtering removes impurities, while the two-stage filter and one-stage water separator ensure purity of engine fuel.



## ◆ Environmentally-friendly Engine

With the exhaust emission in line with EPA Final Tier4 and EC Stage III B Emission Standards, the engine is environmentally friendly in the new era.

## ◆ Using Track Roller With Bilateral Support as Carrier Roller, Achieves Higher Reliability and Stronger Traveling Force at High/Low Travel Speed

With advanced travel motor and optimized flow distribution system, the machine can work more efficiently by traveling at high or low speed according to ground surface condition and working area.



## ◆ Faster Operating Speed

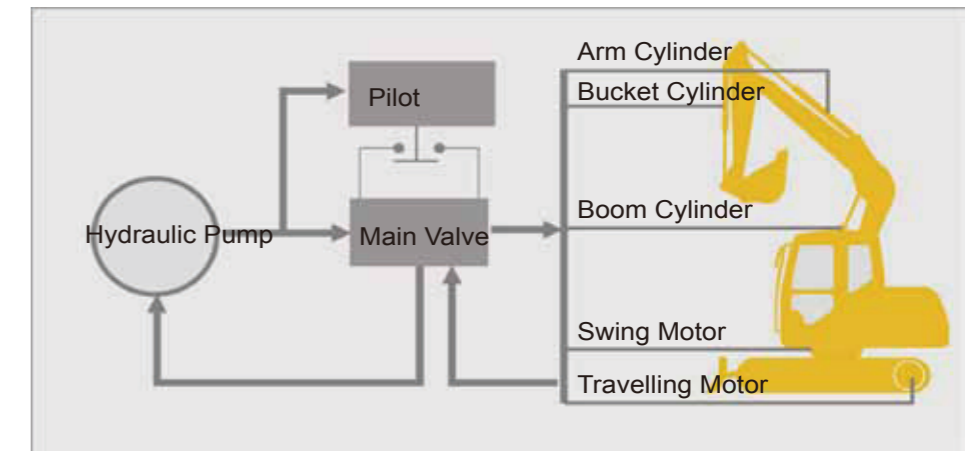
A quick return line is added to the arm oil cylinder circuit, which has considerably improved the operating efficiency at low energy consumption. The advanced main valve, which has been thoroughly optimized, is able to provide excellent coordinating and leveling performance in combined operations. It also increases the moving speed of arm and bucket. In addition to the arm regenerating function, the operating efficiency of machine has been improved.

## ◆ Load-sensitivity Flow Distribution System with Good Micro-operation Performance

Consisting of variable single pumps that provide a constant overall power, the load-sensitivity flow distribution system is of high stability and excellent micro-operation performance, offering an almost perfect meticulous process. Its superior performance lies in that flow demand is determined according to the actuators and their corresponding actions. The operating accuracy is irrelevant to load. It is only related to the deflection angle of control levers. The optimization of main valve can realize the coordination of multi-movement, making different trajectories to meet the requirements of delicate operation.

## ◆ Innovative Dozer Blade Improve the Operating Efficiency

Equipped with an innovative dozer blade that has an increased magnitude of moving up and down, this machine is very suitable for complex operating conditions, such as road construction and burying pipelines or cables. The dozer blade has a special shape and a wider plate that prevents soil from falling behind, which considerably improves the efficiency of excavating, landfill and leveling.



## ◆ Large-capacity Bucket

The standard bucket has a capacity of 0.28m<sup>3</sup>, which has been redesigned to reduce cutting resistance and enhance bucket strength.

## ◆ Excellent Near-body Performance

Bucket tips can be very close to the dozer blade, which makes the machine work efficiently within a wider working range.



# SAFE AND COMFORT ABLE OPERATING EXPERIENCE

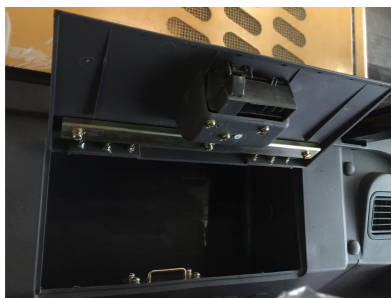


## ◆ Innovative Large Cab

Larger windows of the newly-designed spacious cab provide you with a wider view. The operator can clearly see the work equipment condition and the surrounding through the front, side and back windows. The upper window of the cab can be moved to the top of the cab when the front window is unlocked. The roof hatch is openable, through which the cab can have better ventilation and more lights. It is also helpful for you to talk with others outside the cab. The control levers and joysticks designed and arranged according to human engineering are all within the reach of operator. They can be operated easily with little force.

## ◆ Humanized Facilities

Thoughtful arrangement of built-in warm/cool storage box, cup holder, literature bag and ashtray.



## ◆ Air-conditioner with Multiple Air Outlets at Different Levels and Locations

High quality automatic air conditioner provides better cooling effect. It creates a more comfortable operating environment by automatically regulating the temperature and humidity inside the cab as the ambient condition changes. There are several air outlets – the front window defrost outlet ensuring operator's visibility, and the outlets for operator face, back and feet – which can be turned on/off as desired. By changing the direction of air stream, the operator can fully enjoy the benefit of air conditioner.

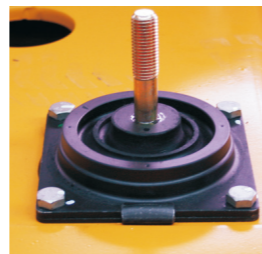
## ◆ Well-sealed Cab, Clean and Quiet



Equipped with excellent sealing, the cab is free from dust and rain. Besides the low-noise design with, low indoor noise can effectively relieve the fatigue of operator.

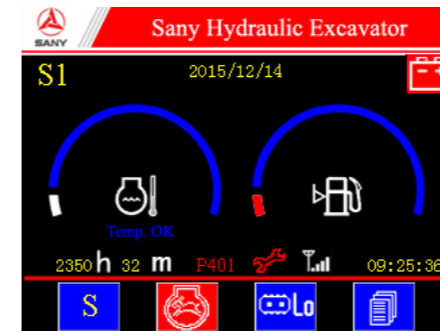
## ◆ Silicone Rubber Shock Absorber

The operator station is supported with innovative silicone rubber shock absorber. This shock absorber is fixed to the swing platform in four points, which has minimized the shock brought by rough road and engine or hydraulic impact, considerably increasing the stability of cab, and improving the comfort of operator.



## ◆ Operating Priority and can Working Modes

The working mode can be easily switched on the monitor.



Heavy duty mode: Full power output provides efficient operation.  
 Standard mode: 90% of the rated power reduces fuel consumption and noise.  
 Light duty mode: 80% of the rated power ensures fuel economy.  
 Break mode: 90% of the rated power reduces fuel consumption

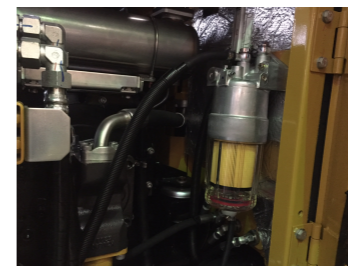
## ◆ Multi-functional Controller with a High Brightness, Wide Viewing Angle LCD Display

Multi-functional controller ensures the system constantly in the optimum condition. When the joysticks are not operated for 3.5 seconds, the controller immediately commands the engine to lower the speed in order to reduce fuel consumption; when the engine or hydraulic system is abnormal, the fault information will appear on the monitor to warn you. High brightness, wide viewing angle industrial LCD allows the operator easily getting the information in the seat.

## ◆ Doc

The perfect match on engine reduces the noise produced by exhaust emission. The adoption of noise insulation material and improved damping system gives better stability, noise reduction and operator comfort.

SY75C is fully covered with steel plates, which are more environment friendly than toughened glass and give better heat dissipation.



## ◆ High-strength Top Plate

The cab top plate, formed with high-strength thick steel sheet, is well capable of ensuring operator's safety against impact and deformation.

## ◆ Anti-skid Steps, Large Handholds, and Protective Railing on The Right of Cab

Specially designed mounting steps can effectively prevent slippery; large handholds can prevent people from slipping; Right railing of the cab increases the safety.



## ◆ Large Rear View Mirror and Alternate Exit

Rear view mirror is mounted on both sides of the cab, through which the operator can observe the situation behind the excavator without turning back. A cab window for alternate exit is also provided for operator to escape in case of emergency.



## ◆ Access Door and Engine Hood Securing Bar

The access door is designed with a hook, and the engine hood is fixed with a gas spring that can help you open the engine hood easily for engine service. The hood can be secured with the bar during maintenance or service of the machine in order to prevent injury caused by wind.

## HIGHER RELIABILITY AND DURABILITY

### ◆ Robot-welding Process

Robot-welding process can ensure the correct, strong and durable structure.

### ◆ Reinforced Boom

The side plates are thicker than before. The ear plates have been redesigned to reduce stress at the bending. The boom has passed the fatigue test and field digging test (soil and rock mixture).



### ◆ Reinforced Bucket

The shape of bucket has been redesigned. Using quality anti-wear plates with a thickness up by 33 percent as bucket bottom, the durability of bucket is greatly extended. No damage to the bucket is caused during field digging test (soil and rock mixture).

### ◆ High-strength Track Frame

The optimized support of dozer blade cylinder is welded to the upper and lower plates in a gearing manner in order to have better strength and rigidity.

### ◆ Undercarriage

Lateral beams using a box-type structure with high strength and rigidity, have excellent torsion and bending resistant performance.

### ◆ Bigger Side Doors for Easy Maintenance and Replacement

Opening the left door allows you to easily access the pilot oil source block, air cleaner, primary oil filter, and electrical parts, and to replace filter elements quickly. Opening the left door allows you to easily check the main pump and hydraulic tank hoses. The side door area is 50 percent larger than that of last generation.

### ◆ Swing Platform

Reinforced plates, welded on the two main beam of swing platform, considerably improve the bending resistance performance. The right and left side beams and the cross beam, made of high-class steel and formed through punching, is designed in D-shaped structure and greatly strengthen the platform.



### ◆ Hydraulic Cylinder Buffer

A buffer provide at both ends of boom and bucket cylinders and at the rod end of bucket cylinder, can absorb the impact of the piston and the cylinder, extend cylinder service life, and reduce noise and vibration.

## SCIENTIFIC STRUCTURE AND EASY MAINTENANCE

### ◆ Longer Maintenance Interval

The use of quality, large-size parts and components can effectively extend machine service life and maintenance intervals, reduce downtime, and improve operating efficiency.



### ◆ Maintenance Prompts

Multi-functional controller can display the items to be maintained and the time for replacement

**50**  
service hours

Replace engine oil and oil filter element  
Check tightening torque of bolts and nuts

**250**  
service hours

Add grease to the bearing of swing reducer assembly  
Clean the primary filter element of air cleaner  
Change engine oil and replace oil filter element  
Replace engine fuel filter element

### ◆ Large-capacity Fuel Tank

Fuel tank capacity up to 20L reduces the times for refueling. Interior of the fuel tank has been treated well against rusting. No rusting will occur even if the tank is soaked in oil containing water or phosphoric acid, or other chemicals for a long period of time.

### ◆ Toolbox and Grease Bucket Storage Place

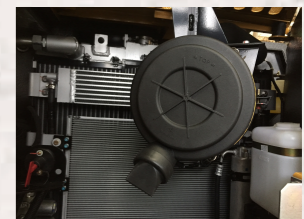
Toolbox and grease bucket storage place is designed to facilitate the daily maintenance.



### ◆ Easy Cleaning of Radiator

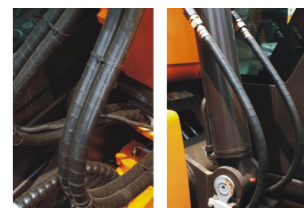
Opening the left rear access door allows you to access the engine radiator. The radiator is protected with a net to prevent invasion of foreign substances. You are only required to remove and clean the net.

New parallel radiators with the specially designed internal structure are easy to flush. The excellent heat dissipating performance of radiator ensures the running of engine for a long period of time.



### ◆ Hoses

Quality hoses, which are used for all high-pressure circuits, have excellent wear resistance performance, extraordinary strength and brilliant resilience that can help reduce maintenance work and extend service life. The hoses used for low pressure application, which are extremely flexible, can help reduce turning radius and extend service life.



# EQUIPMENT SPECIFICATION

## SPECIFICATION

### ENGINE

|                            |              |
|----------------------------|--------------|
| ◆ Model.....               | Isuzu 4LE2X  |
| ◆ Displacement.....        | 2.179L       |
| Engine power               |              |
| At rated engine speed..... | 43kw/2000rpm |

### HYDRAULIC SYSTEM

|   |  |
|---|--|
| Type.....                                 | Load Sensibility                               |
| ◆ Number of selectable working modes..... | 4  |
| <b>Main pump</b>                          |  |
| Type.....                                 | Variable-capacity piston pumps                 |
| Maximum flow.....                         | 149ltr/min                                     |
| <b>Hydraulic motors</b>                   |  |
| Travel.....                               | 2* axial piston motor with parking brake       |
| Swing.....                                | 1* axial piston motor with swing holding brake |

### ◆ DIGGING FORCE

|                           |      |
|---------------------------|------|
| Bucket Digging Force..... | 51kN |
| Arm Digging Force.....    | 30kN |

### ◆ OPERATING WEIGHT

|  |        |
|--|--------|
| Operating weight with standard bucket, fully serviced, +75 kg operator (ISO) |        |
| Operating weight.....  | 7280kg |

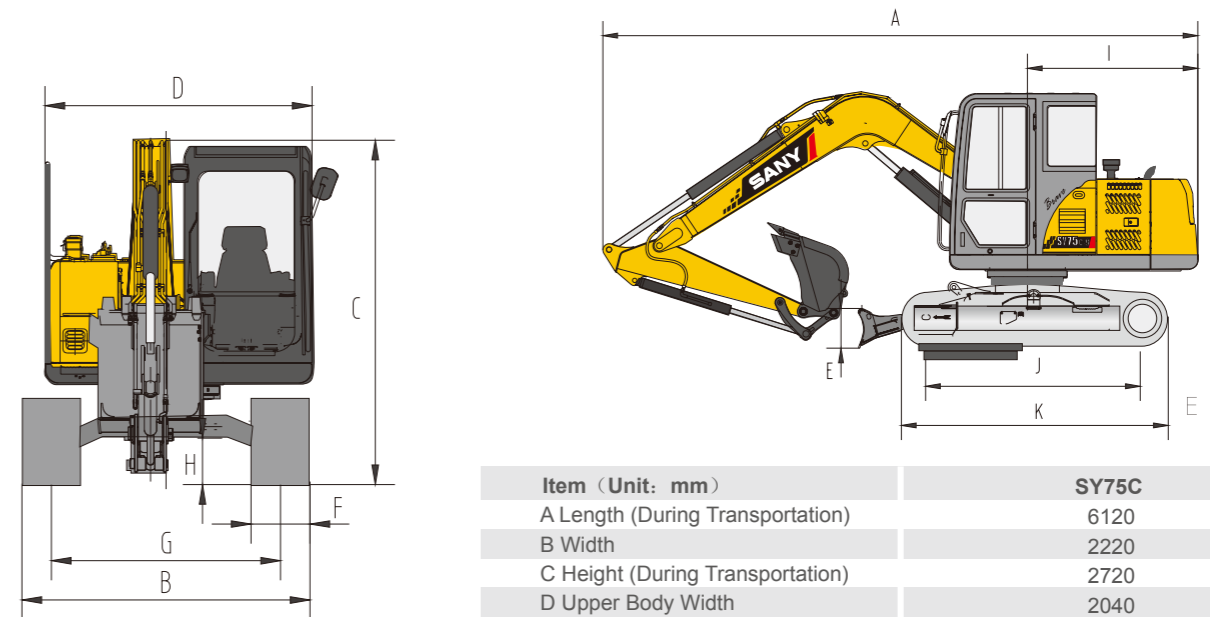
### ◆ UNDERCARRIAGE

|                                |       |
|--------------------------------|-------|
| Track width.....               | 450mm |
| Carrier roller (per side)..... | 1     |
| Track roller(per side).....    | 5     |

### ◆ TRANSMISSION

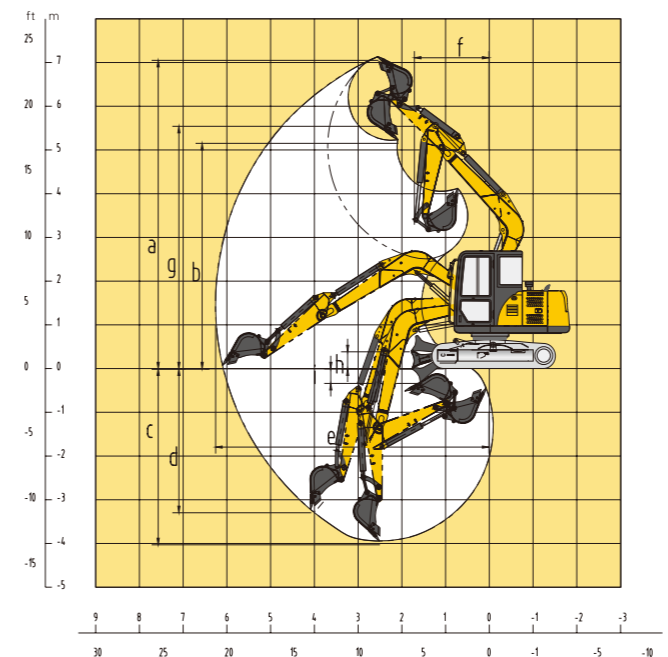
|                      |         |
|----------------------|---------|
| Swing Speed.....     | 10.5rpm |
| Gradeability.....    | 70%/35  |
| Ground Pressure..... | 33KPa   |

## DIMENSION



| Item (Unit: mm)                  | SY75C |
|----------------------------------|-------|
| A Length (During Transportation) | 6120  |
| B Width                          | 2220  |
| C Height (During Transportation) | 2720  |
| D Upper Body Width               | 2040  |
| E Blade Height                   | 405   |
| F Std. Track Width               | 450   |
| G Track Gauge                    | 1750  |
| H Min. Ground Clearance          | 380   |
| I Tail Swing Radius              | 1800  |
| J Roller Gauge                   | 2195  |
| K Track Length                   | 2820  |

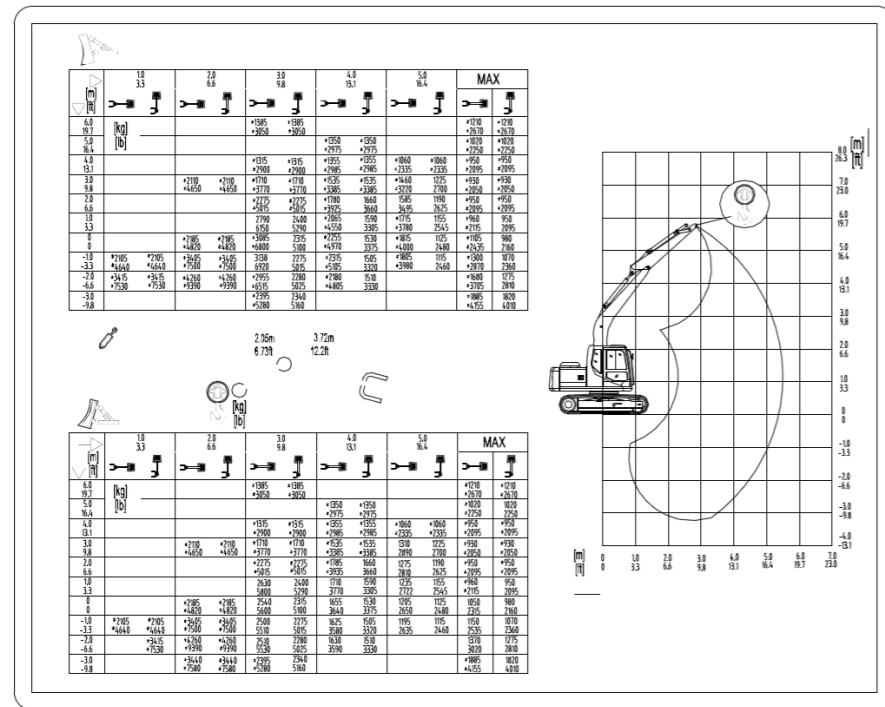
## OPERATION RANGE



| Item (Unit: mm)                                       | SY75C |
|---|-------|
| a Max. Digging Height                                 | 7390  |
| b Max. Dumping Height                                 | 5490  |
| c Max. Digging Depth                                  | 4450  |
| d Max. Vertical Digging Depth                         | 3840  |
| e Max. Excavating Distance                            | 6505  |
| f Min. Swing Radius                                   | 1940  |
| g Height at Min. Swing Radius                         | 5560  |
| h Maximum Ground Clearance of Bulldozer Blade(rising) | 390   |
| i Maximum Sinking Depth of Bulldozer Blade            | 330   |

Materials and specifications are subject to change without further notice in accordance with our continuous technical innovations. Photos and illustrations may not include all equipments.

## SY75C LIFTING CAPACITY



## Pressure and Capacities

### WELGHTS AND GROUND PRESSURE

| Shoe type     | Shoe width | Mode SY75C914K   |                 |
|---------------|------------|------------------|-----------------|
|               |            | Operating weight | Ground pressure |
| Tripe grouser | 450mm      | 7280Kg           | 33Kpa           |

### SERVICE REFILL CAPACITIES

|                               | Liters |
|-------------------------------|--------|
| Fuel tank.....                | 150    |
| Engine coolant.....           | 10.8   |
| Engine oil.....               | 10     |
| Swing device.....             | 1.5    |
| Travel device(each side)..... | 1.2    |
| Hydraulic oil tank.....       | 120    |

## STANDARD & OPTIONAL

### STANDARD EQUIPMENT

#### Engine

- Alternator 50A
- Dry thriple-filtering air cleaner
- Cylindrical engine oil filter
- Radiator with protective screen
- Auxiliary water tank for radiator
- Fan cowl
- Separately installed engine
- Water separator

#### Undercarriage

- Travel brake
- Travel motor guard
- H-track guiding mechanism
- Hydraulic track tensioner
- Bolted sprocket
- Carrier roller and track roller
- Reinforced track link with pin seal
- 450 mm track shoe
- Bottom coverplate

#### Alarm Lights

- Oil pressure lack, engine coolant overheat
- Throttle knob fault
- Fuel oil lack
- Voltage higher than specification
- Engine over speed

#### Indicator Lights

- Auto-idle、engine warm up
- Engine coolant temperature
- Hi/Lo speed

#### Operator Station

- Noiseproof steel-structured cab
- Toughened light-color window
- 4 sillicone rubber damping support
- Openable roof hatch, upper front windo and left window
- Rear window,alternate exit
- silent window wiper with washer
- Adjustable inclined seat with adjustable armrest
- AM-FM radio with digital clock
- Foot rest and floor mat
- Loudspeaker,rear view mirror
- Seat belt and fire extinguisher
- Cub holder and cab light
- Ashtray
- Storage box, literature bag
- Hydraulic lockout control
- Fully automatic air-conditioner

#### Swing Platform

- Fuel level float
- Hydraulic oil level gauge
- Toolbox
- Rear view mirror (R)
- Swing brake
- Grease barrel holder
- Counterweight

#### Front Work Equipment

- Flange pin
- Bucket clearance adjustment
- Welded lever
- Central lubrication system
- Dust ring-seal of bucket pin
- A variety of bucket for optional

#### Hydraulic System

- Control valve with main relief valve Spare oil port for control valve Oil suction filter
- Oil return filter
- Pilot filter
- Hydraulic quick coupler lines
- 1-way and 2-way (combined function) auxiliary hydraulic lines
- Automatic swing park brake
- Automatic two speed travel
- Hydraulic oil cooler

